

Excited for  
your new  
pool?



SHIPPING  
CONTAINER  
POOLS

# Let's show you how to use it!

Get to Know

1

Plug In

2

Fill Up

3

Start Up

4

Test Water

5

Care and Play

6

# We're Here To Help

We bet you are excited to start using your new revolutionary, lightweight, all-in-one above-ground swimming pool. Follow our quick start guide to get your pool ready for some play in just a few easy steps.

For further support details and in-depth information about the pool, please get in touch with us.



# Step 1

## Get To Know Your Set Up

This may not be your first rodeo, but if it is we want to make sure you feel comfortable with how to start and maintain your pool. Every pool is different depending on what upgrades were ordered. Below is an overview of what our standard pools include. If you have additional upgrades, please refer to the support guide for details.

### Skimmer Box

The skimmer box does what the name says - it skims any floating debris from the surfaces of your pool.

### Filtration

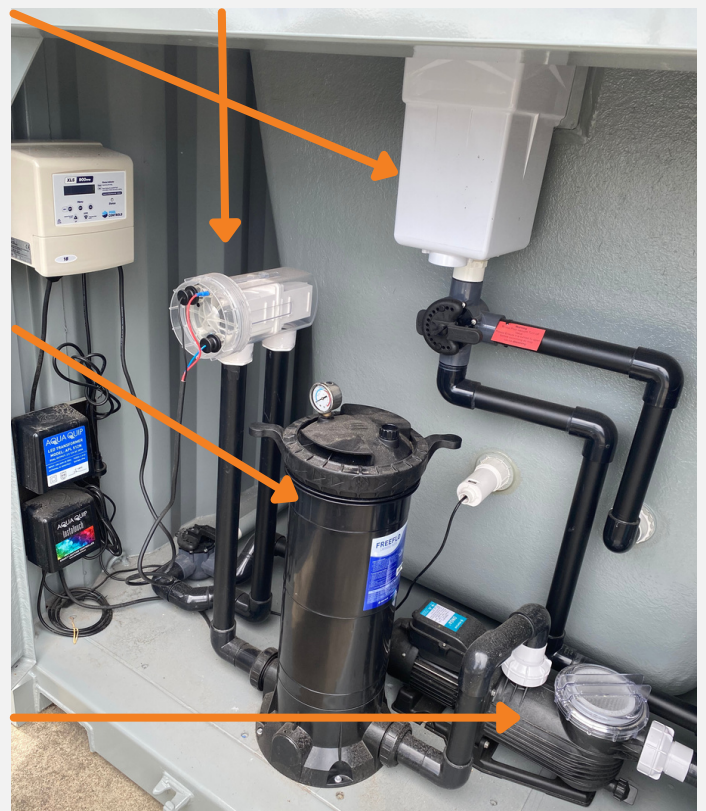
The filter's job is to remove fine suspended particles from the pool water, leaving it sparkling clean and crystal clear.

### Pump

The pump draws water from your pool through the skimmer box and submerged safety outlet and circulates it through the filter, then through the chlorinator cell, and returns clean, sanitised water to your pool.

### Sanitation

The sanitation system converts dissolved magnesium salt into chlorine that quickly and effectively kills and bacteria, spores, viruses and algae in your pool water.



# Step 2

## Plug Into Power

This step is for your electrician, but we will explain it to you so you know what's happening. Your electrician needs to supply a single 240VAC 10A circuit to power the sanitation system, pump, and additional accessories. Up to three GPOs are necessary. If you've purchased a swim jet or a heat pump, your electrician will also need to supply a 240VAC circuit for each. Depending on the swim jet and heat pump option, each circuit will be a 15A (plugged) or 25A (fixed) connection.

In every case, your electrician will also need to ensure the container is properly earthed - ideally, through its own strap.



# Step 3

## Fill Up Your Pool

Before you fill your pool, ensure you have engaged a pool safety certifier to provide a certificate of compliance according to your local area.

Many Shipping Container Pool clients simply fill their pool from the garden hose. This is fine. Others choose to fill via a water tanker and if this is your preferred option, be certain to specify potable (drinking quality) water to ensure there are no unwanted impurities in your pool.

Check the water level, it should be halfway up the skimmer box door. Never drain the pool lower than the mouth of the skimmer box.



Keep going,  
almost there!



# Step 4

## Start It Up

As soon as possible, pour in your magnesium salt, and start your filtration and sanitisation system. The filter will remove any small particles suspended in the water, the first step towards a sparkling clear pool!





# Step 5

## Test Your Water

Once the magnesium salt has dissolved and you've run the pump for at least 24 hours, take a water sample to your local pool shop for analysis (a sample bottle is provided in your startup kit).

Tell them your pool capacity is 11,600 litres (for a 6m pool) or 25,100 litres (for a 12m pool), and that your magnesium system runs on total dissolved solids (TDS) of 1,500 parts per million. They will need this information to calculate the correct amount of buffer (sodium bicarbonate) and sunscreen (cyanuric acid). You may also need to add some pH decreaser as well (hydrochloric acid).

Add their recommended chemicals to your pool, and that's it! Your pool is perfectly balanced and ready for swim time.



# Step 6

## Take Care Of Your Pool

You've officially joined the Shipping Container Pool family!

Follow our tips and checklists to assist you in taking care of and maintaining your pool.

We are always here to help, please let us know if you have any questions about your new pool.

Now have some Shipping Fun!



# Checklists



## WEEKLY CHECKLIST

Check & adjust pH & chlorine levels	✓
Clean skimmer basket	✓
Scoop pool for leaves and debris	✓
Check the water level, add water if necessary	✓
Have fun with your pool	✓



# Checklists



## MONTHLY CHECKLIST

Clean and hose down pool exterior	✓
Check all equipment - no obvious changes?	✓
Check seals - any water leaks?	✓
Check the filter pressure gauge - time to clean?	✓
Clean off any waterline residues	✓
Take a water sample to your poolshop for analysis - any adjustments needed?	✓



## YEARLY TASK

Your pool uses less chlorine throughout the winter months. Be sure to keep the level below 4ppm to avoid any bleaching of your fibreglass pool shell. Be guided by your pool shop advice - they are the experts!	✓
--	---

As a Shipping Container Pool owner, you are responsible for its safe and proper use. You will need to maintain your pool and ensure it continues to meet the regulatory requirements of your region. If you require further information on your pool, please reference your support guide.

# Don't forget to send us a pic!

@shippingcontainerpools  
#shippingcontainerpools  
#shippingfun



If you love your new pool, we'd love a review on Google.  
As a small business, your feedback makes a huge difference to us! Click [here](#) to leave your review.

# Thank You



SHIPPING  
CONTAINER  
POOLS